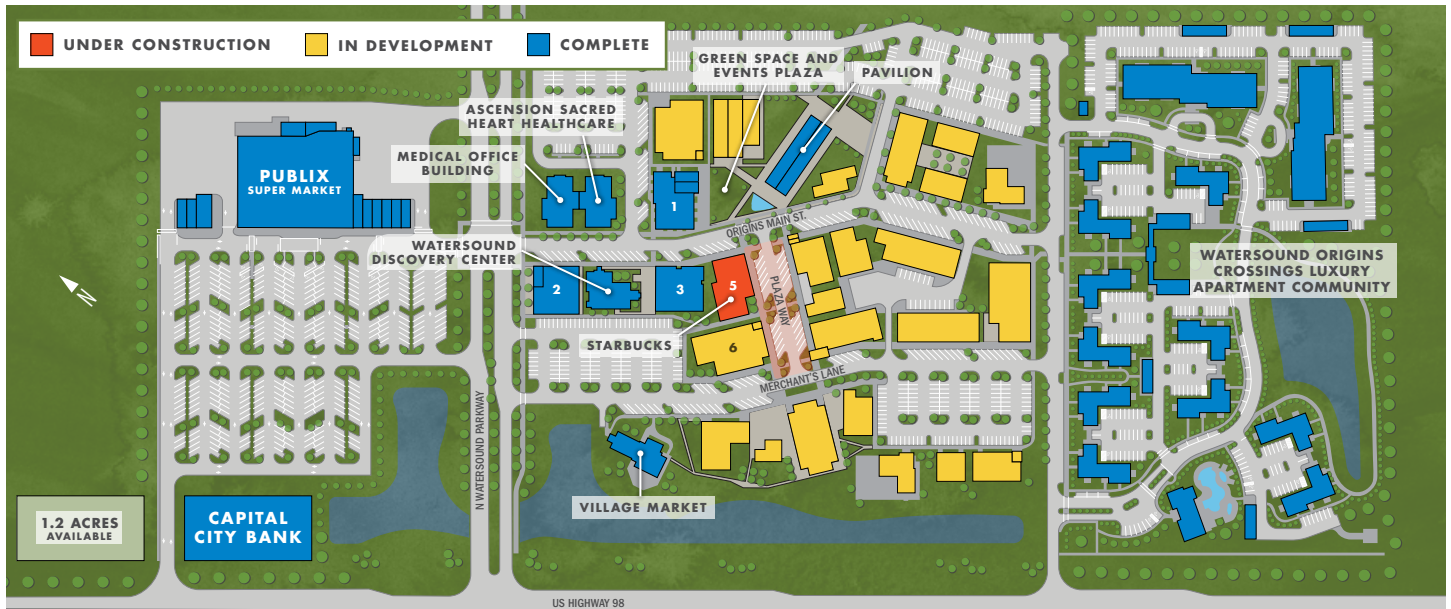




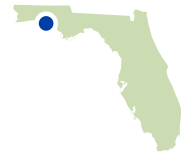
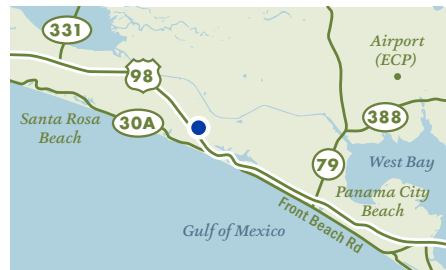
WATERSOUND® TOWN CENTER



IN GOOD COMPANY

The growing tenant mix at Watersound Town Center attracts local residents running their daily errands, couples on date night, families strolling in the fresh air and everything in between. Your business will benefit from co-tenancy that appeals to a wide range of consumers visiting the current and future tenants below.

- **PUBLIX SUPERMARKET** – Marco's Pizza, Electric Cart Company, friends 30A Burger Bar, Publix Liquors, Grand Nail Salon, Fleet Feet, Bahama Buck's, FedEx Office
- **BUILDING 1** – Ambrosia Prime Seafood & Steaks, Dermatology Specialists of Florida and Aqua Medical Spa, Ascension Sacred Heart Women's Diagnostic Center
- **BUILDING 2** – Sweet Henrietta's, Halo Salon & Blowout Bar, Summer House Lifestyle, Watersound® Executive Suites
- **BUILDING 3** – Nigel's Bananas, F. Reese Harrison Family Dentistry, future high-end sports bar
- **BUILDING 5** – Starbucks
- **VILLAGE MARKET AT WATERSOUND TOWN CENTER**
- **CAPITAL CITY BANK**



CONTACT

Samantha Walton | Commercial Sales & Leasing Director
850.231.6531 / samantha.walton@joe.com

Lawson Trantina | Commercial Sales & Leasing Coordinator
850.738.5053 / lawson.trantina@joe.com

Logan Yates | Commercial Sales & Leasing Coordinator
850.231.6430 / logan.yates@joe.com

WATERSOUNDTOWNCENTER.COM / JOE.COM / The St. Joe Company / 130 Richard Jackson Blvd, Suite 200, Panama City Beach, FL 32407

This material may contain information that is based on current development plans, which are subject to change without notice. Actual development may not be as currently proposed. This material contains selected information pertaining to the project and does not purport to contain all the information which prospective users may desire. Prospective purchasers should review all available information either from the owner or from independent sources and make decisions based upon their own conclusions. All information reflected in this document is subject to prior placement, errors, omissions, changes or withdrawal without notice and does not constitute a recommendation, endorsement or advice as to the value or as to the advisability of any project described herein. No liability is assumed by and none shall be asserted against the owner, nor any of owner's affiliated companies or any of the foregoing company officers, agents, or employees on account of any statements, descriptions, or information contained herein. This material does not constitute an offer and the owner shall not be bound to any obligation until a mutually agreed-upon, binding agreement is executed by all parties. © 2024, The St. Joe Company, "St. Joe," "JOE," the "Taking Flight" design, Watersound Origins and the Featured Community names are registered service marks of The St. Joe Company or its affiliated companies. Map not drawn to scale. Artist's rendering.



WATERSOUND® TOWN CENTER

BUILDING 3



AVAILABLE RETAIL AND OFFICE SPACE US HIGHWAY 98, WATERSOUND, FLORIDA

AT THE CENTER OF IT ALL

- Watersound Town Center offers ground floor opportunities for retail and restaurants. The second floor has available space for offices and professional/public services.
- Watersound Town Center serves three distinct areas: the Watersound Origins® community where residents can ride their golf carts or bikes to the Town Center, commuters on US Highway 98, and homeowners and visitors along Scenic Highway 30A and neighboring Panama City Beach.
- Enjoy high visibility from US Highway 98, direct access to a Scenic Highway 30A by way of Watersound Parkway, proximity to three schools (Dune Lakes Elementary, Magnet Innovation Center, and Ohana Institute), Sacred Heart medical offices, and a Publix grocery store.



CONTACT

Samantha Walton | Commercial Sales & Leasing Director
850.231.6531 / samantha.walton@joe.com

Lawson Trantina | Commercial Sales & Leasing Coordinator
850.738.5053 / lawson.trantina@joe.com

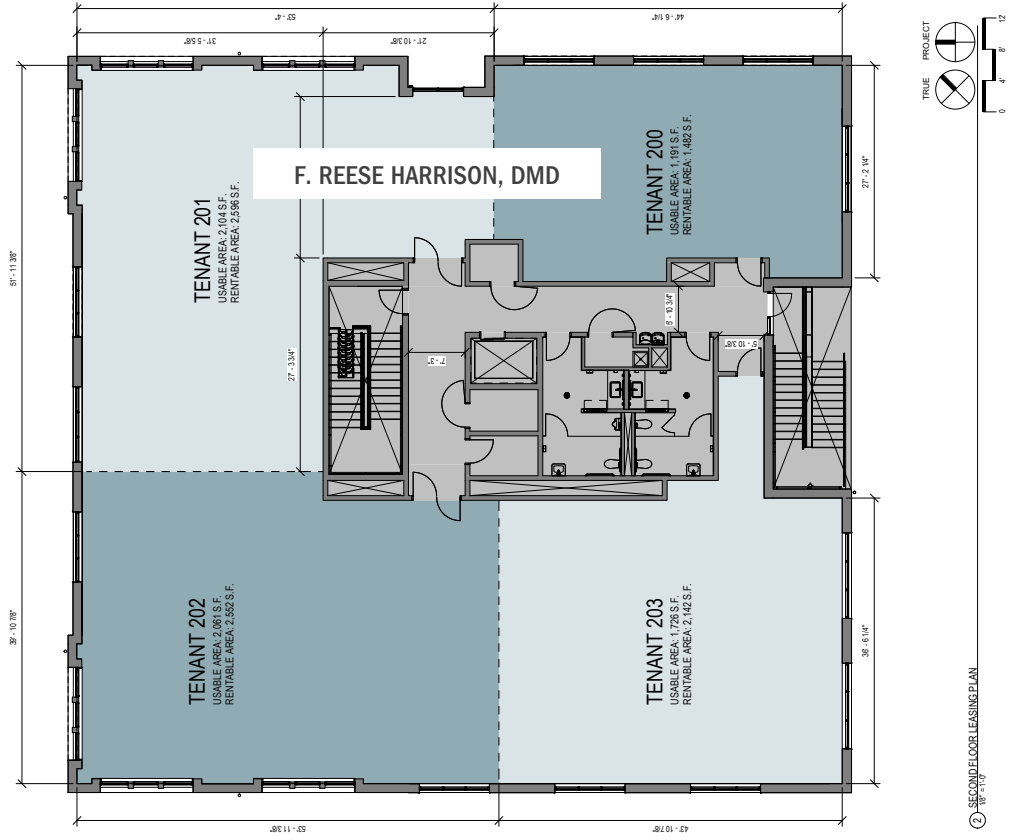
Logan Yates | Commercial Sales & Leasing Coordinator
850.231.6430 / logan.yates@joe.com



WATERSOUND® TOWN CENTER

BUILDING 3

FLOOR PLANS





WATERSOUND[®] TOWN CENTER

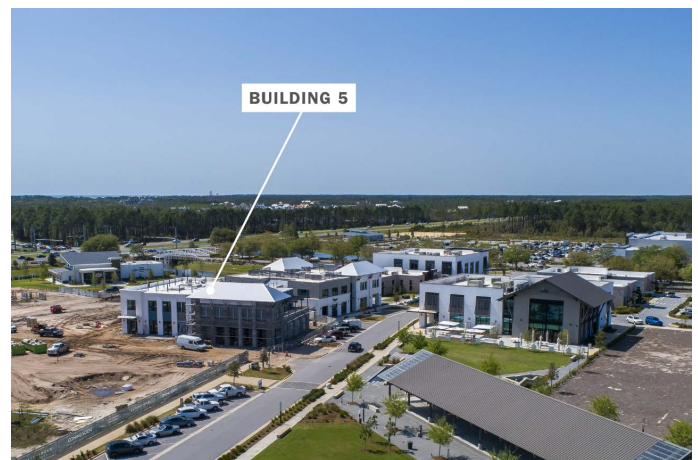
BUILDING 5



AVAILABLE RETAIL, RESTAURANT, AND OFFICE SPACE US HIGHWAY 98, WATERSOUND, FLORIDA

AT THE CENTER OF IT ALL

- Watersound Town Center offers ground floor opportunities for retail and restaurants. The second floor has available space for offices and professional/public services.
- Watersound Town Center serves three distinct areas: the Watersound Origins[®] community where residents can ride their golf carts or bikes to the Town Center, commuters on US Highway 98, and homeowners and visitors along Scenic Highway 30A and neighboring Panama City Beach.
- Enjoy high visibility from US Highway 98, direct access to a Scenic Highway 30A by way of Watersound Parkway, proximity to three schools (Dune Lakes Elementary, Magnet Innovation Center, and Ohana Institute), Sacred Heart medical offices, and a Publix grocery store.



CONTACT

Samantha Walton | Commercial Sales & Leasing Director
850.231.6531 / samantha.walton@joe.com

Lawson Trantina | Commercial Sales & Leasing Coordinator
850.738.5053 / lawson.trantina@joe.com

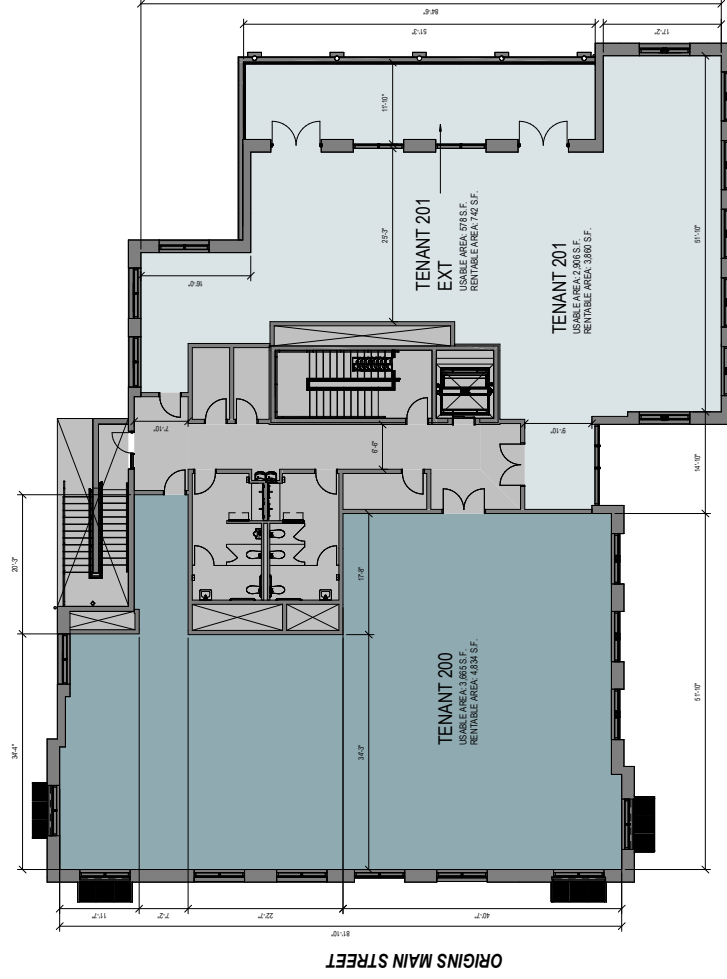
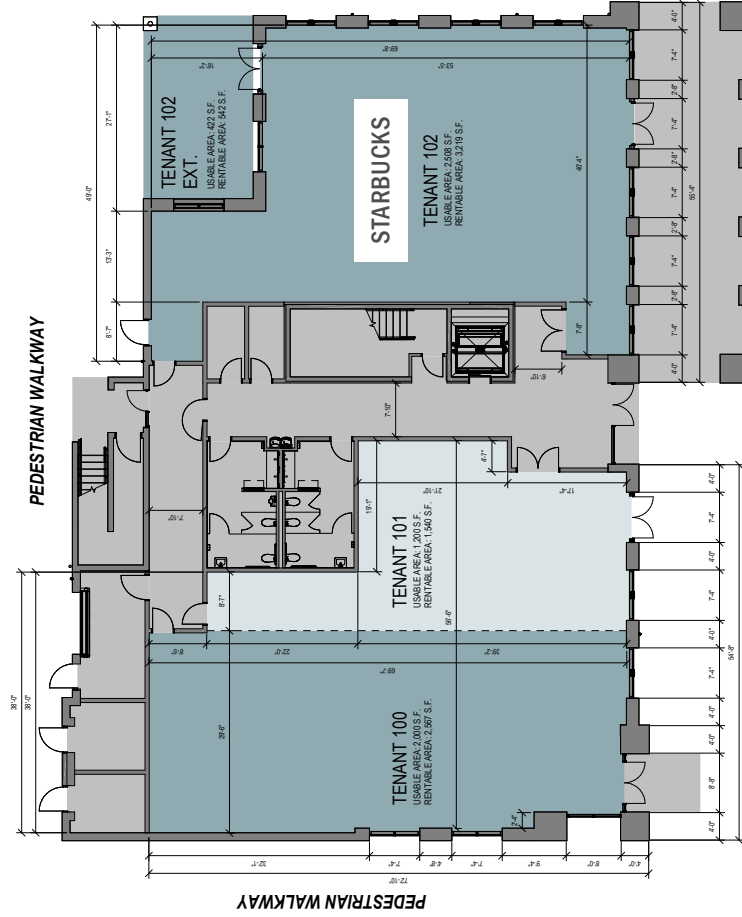
Logan Yates | Commercial Sales & Leasing Coordinator
850.231.6430 / logan.yates@joe.com



WATERSOUND® TOWN CENTER

BUILDING 5

FLOOR PLANS





WATERSOUND® TOWN CENTER

BUILDING 6



AVAILABLE RETAIL AND OFFICE SPACE US HIGHWAY 98, WATERSOUND, FLORIDA

AT THE CENTER OF IT ALL

- Watersound Town Center offers ground floor opportunities for retail and restaurants. The second floor has available space for offices and professional/public services.
- Watersound Town Center serves three distinct areas: the Watersound Origins® community where residents can ride their golf carts or bikes to the Town Center, commuters on US Highway 98, and homeowners and visitors along Scenic Highway 30A and neighboring Panama City Beach.
- Enjoy high visibility from US Highway 98, direct access to a Scenic Highway 30A by way of Watersound Parkway, proximity to three schools (Dune Lakes Elementary, Magnet Innovation Center, and Ohana Institute), Sacred Heart medical offices, and a Publix grocery store.



CONTACT

Samantha Walton | Commercial Sales & Leasing Director
850.231.6531 / samantha.walton@joe.com

Lawson Trantina | Commercial Sales & Leasing Coordinator
850.738.5053 / lawson.trantina@joe.com

Logan Yates | Commercial Sales & Leasing Coordinator
850.231.6430 / logan.yates@joe.com

WATERSOUNDTOWNCENTER.COM / JOE.COM / The St. Joe Company / 130 Richard Jackson Blvd, Suite 200, Panama City Beach, FL 32407

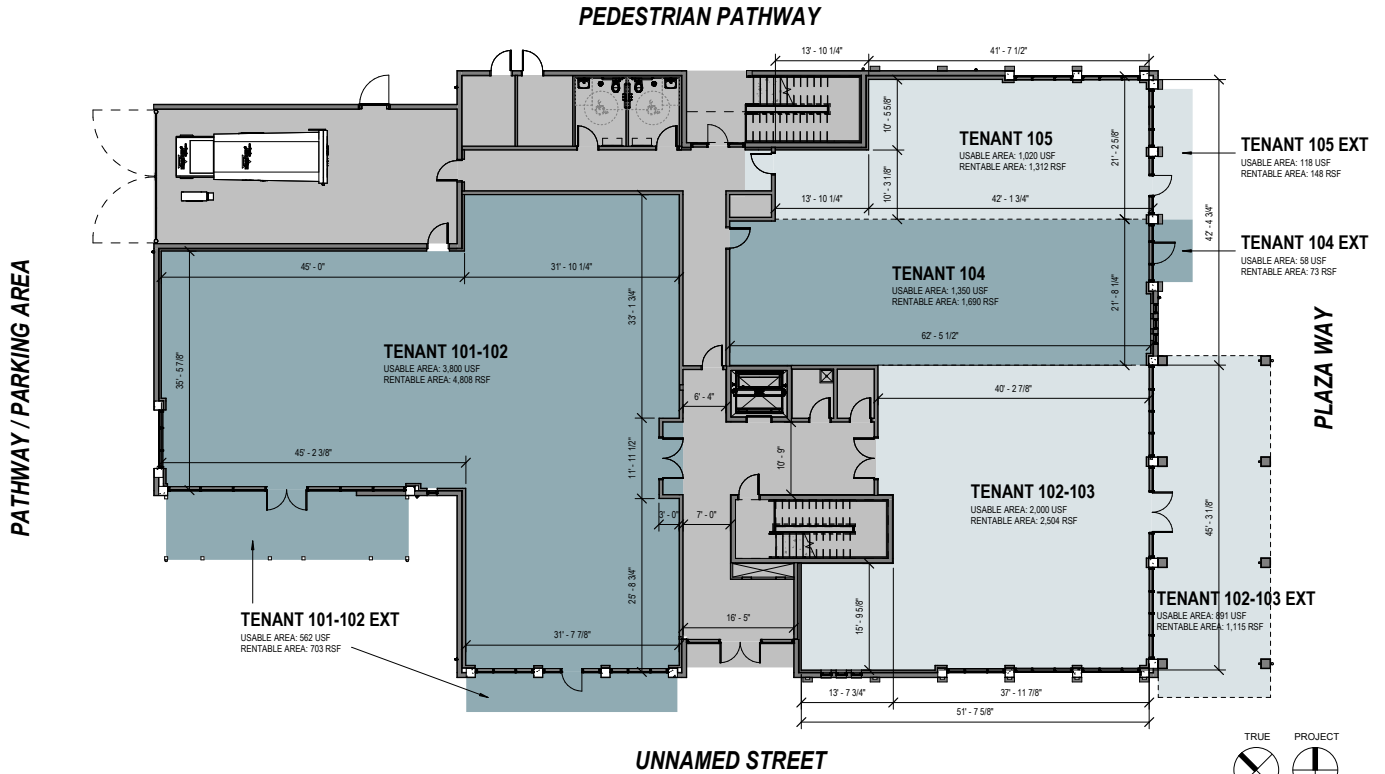
© 2024 The St. Joe Company. All rights reserved. "St. Joe," "JOE," and the "Taking Flight" design are registered service marks of The St. Joe Company.



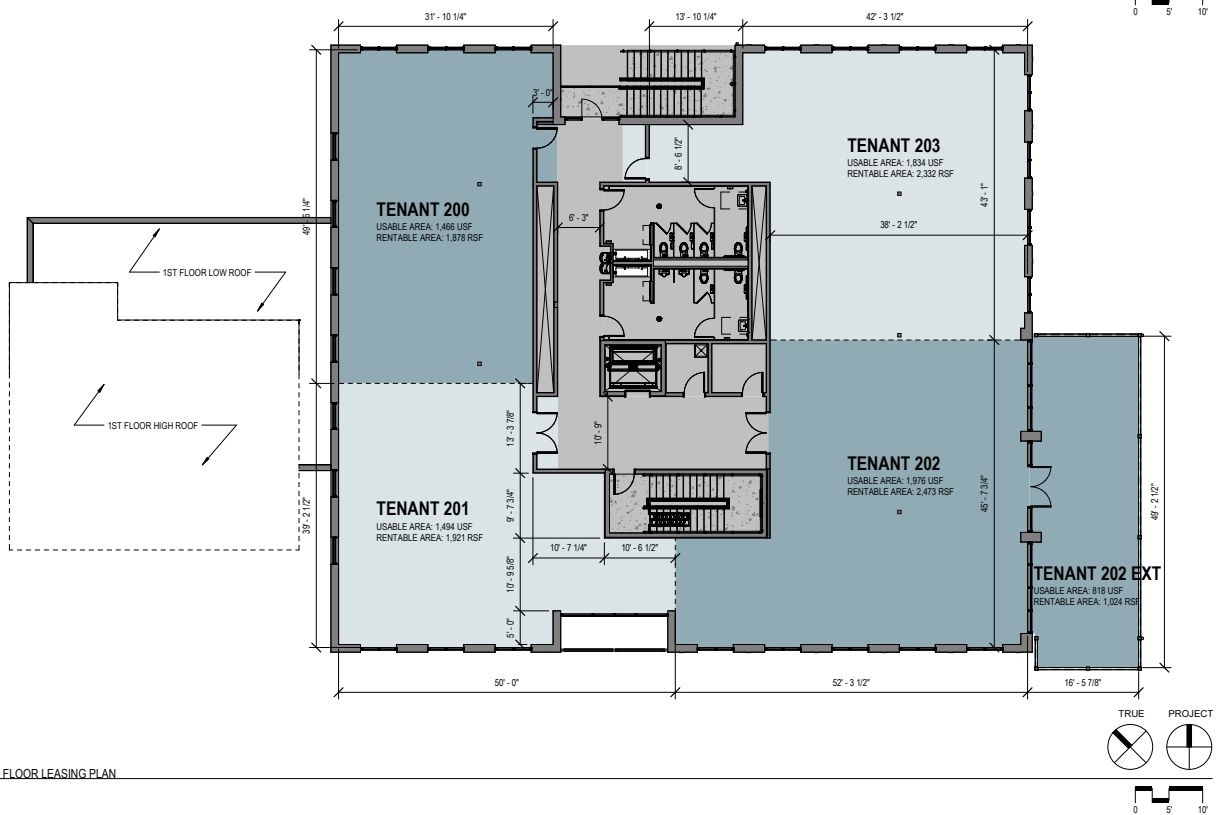
WATERSOUND® TOWN CENTER

BUILDING 6

FLOOR PLANS



① FIRST FLOOR LEASING PLAN
3/32" = 1'-0"



② SECOND FLOOR LEASING PLAN
3/32" = 1'-0"